

CENTRAL SOUTHLAND COLLEGE

Reach for the Heights



PROSPECTUS



Welcome to Central Southland College

We offer a vibrant, supportive school community with a wealth of opportunities and experiences for our students. Big enough to provide everything that is important, yet small enough for your children to feel known, noticed and valued.

I am proud to be part of such a strong and successful school, which is committed to providing the best secondary education for its community.

Our vision is described by the words "To the Heights" – reflecting our goal to provide a leading education while also developing young people confident and skilled in successfully leading their own learning at school and beyond.

In partnership with parents and our community, Central Southland College seeks to develop our students into mature and well-adjusted young adults, confident and equipped to make positive contributions to society.

Mr. Grant Dick
Principal



School Website

174 McKenzie Street
Winton 9720

www.csc.school.nz
office@csc.school.nz



Google+ Community Page





Motto

AD Summum - To The Heights

Ki Te Mautauranga Teitei

Mission

At CSC we provide a range of dynamic, academic, cultural, sporting and personalised learning experiences for all our students. We deliver quality teaching in a challenging but supportive environment, which fosters and acknowledges our agreed values and the positive behaviour for learning framework. CSC students will be well equipped for life beyond school with a set of skills that can lead to success.

Vision

To develop educated, connected and confident young people

HERE@CSC We Value

Honesty

Effort

Responsibility

Empathy

“Students learn in a positive environment. There are effective systems for promoting student wellbeing and achievement. Deans know their students well as learners and individuals. The extent of students’ involvement in school activities is considerable. ERO noted students were very busy participating in a wide range of events and activities” ERO 2015

“Students benefit from a broad and rich curriculum. They appreciate the many sports, cultural and beyond the classroom learning experiences. There is a focus on ensuring that students grow to be well-rounded adults. This aligns with parents’ aspirations.” ERO 2015



HERE @ CSC

HONESTY

EMPATHY

RESPONSIBILITY

EFFORT



Our Supportive Environment

New Students. How will we look after you?

Your **Form Teacher** meets with you at the start of every day.

For Year 9's, Year 13 **Peer Support Leaders** are there to help with team building, guidance, friendship and support.

Your **Form Class camp** will help you get to know new classmates from all over the district.

Your **Dean** will support and guide you throughout your time at CSC.

Your **Guidance Counsellor** will listen any time you need special help.

Our **Health Nurse** is available one lunchtime per week.

Your **Coaches** will extend you in your favourite sports and cultural activities.

Your **Careers Advisor** will guide you with subject choice and pathway planning.

Of course, all your **Teachers** will help you learn every day!

and remember,

“the most important piece of the puzzle, is you the **Student**”.





Focus on Teaching and Learning

Central Southland College delivers the full New Zealand Curriculum, packaged as a mix of compulsory and option courses in the junior school, progressing through to a fully optional course structure at Year 13.

Extensive advice and guidance is provided at every step to co-construct courses of study that appropriately match students career aspirations, skills and aptitudes. Consultation with family and whanau is a constant in this process.

HERE@CSC we take the time to know each student and their whanau so we can be responsive to their needs and goals, and tailor support accordingly. At the same time we are demanding of our students; challenging them to reach to the heights and produce their best efforts on a consistent basis. Students are expected to have an increasing level of responsibility over their learning as they move through the school.

Senior students at CSC study towards New Zealand's internationally recognised qualification - **NCEA** (National Certificate of Educational Achievement).

NCEA courses of study progress over three levels. Many different styles of assessment are used to cater for a diverse range of student needs. These include written, verbal, visual, performance-based and practical assessments.

Assessments are a combination of:

: **Internal Assessment** - These are completed at school and assessed by CSC staff

: **External Assessment** - These end of year examinations and portfolios are administered by NZQA.



Routines, Rules and Expectations

Learning is a process and the best possible learning takes place when all three partners in the process, teachers, parents, and the students themselves, work together and strive for the same goals. The development of this partnership is a major focus for Central Southland College.

A comprehensive description of routines and rules is found in the full Student Handbook which is included with this prospectus and available on the school website - www.csc.school.nz

Daily Timetable Structure

CSC School Day	
Form Briefing	8:55 - 9:05
Period 1	9:05 - 10:00
Period 2	10:00 - 10:55
Interval	10:55 - 11:15
Period 3	11:15 - 12:10
Period 4	12:10 - 1:05
Lunch	1:05 - 1:45
Formtime	1:45 - 2:10
Period 5	2:10 - 3:05



Digital Devices - BYOD

Students are required to bring their own device for learning to school with them each day to benefit from the school's connected environment and modern classroom learning opportunities.

CSC recommends a laptop with a Windows or Mac operating system as the best fit device for learning. Chromebooks are suitable for most tasks in core junior classes.

We use the Google Suite for Education tools as our core apps for everyday teaching and learning and to assist with the continuity of student work between school and home.



Curriculum Progression

Learning Areas	YEAR 9	YEAR 10	YEAR 11	YEAR 12	YEAR 13
English	<ul style="list-style-type: none"> English 	<ul style="list-style-type: none"> English 	<ul style="list-style-type: none"> English 101 English 102 	<ul style="list-style-type: none"> English 201 English 202 	<ul style="list-style-type: none"> English 301 English 302
Science	<ul style="list-style-type: none"> Science Agriculture 	<ul style="list-style-type: none"> Science Agriculture 	<ul style="list-style-type: none"> Science 101 Science 102 Agriculture 101 Agriculture Trades Academy 1 	<ul style="list-style-type: none"> Biology 201 Chemistry 201 Physics 201 Science 201 Agriculture 201 Agriculture Trades Academy 2 	<ul style="list-style-type: none"> Biology 301 Chemistry 301 Physics 301 Agriculture 301
Mathematics	<ul style="list-style-type: none"> Mathematics 	<ul style="list-style-type: none"> Mathematics 	<ul style="list-style-type: none"> Mathematics 101 Mathematics with Statistics 101 Mathematics 102 	<ul style="list-style-type: none"> Mathematics 201 Mathematics with Statistics 201 	<ul style="list-style-type: none"> Mathematics with Calculus 301 Mathematics with Statistics 301
Social Science	<ul style="list-style-type: none"> Social Studies Economics 	<ul style="list-style-type: none"> Social Studies Economics 	<ul style="list-style-type: none"> Geography 101 History 101 Economics 101 Accounting 101 	<ul style="list-style-type: none"> Geography 201 History 201 Tourism 201 Economics 201 Accounting 201 	<ul style="list-style-type: none"> Geography 301 History 301 Tourism 301 Economics 301 Accounting 301
Physical Education & Health	<ul style="list-style-type: none"> Physical Education & Health 	<ul style="list-style-type: none"> Physical Education & Health 	<ul style="list-style-type: none"> Physical Education 101 Recreation 	<ul style="list-style-type: none"> Physical Education 201 Recreation 	<ul style="list-style-type: none"> Physical Education 301
The Arts	<ul style="list-style-type: none"> Art Drama Music 	<ul style="list-style-type: none"> Art Drama Music 	<ul style="list-style-type: none"> Art 101 Drama 101 Music 101 	<ul style="list-style-type: none"> Painting 201 Printmaking 201 Photography 201 Drama 201 Music 201 	<ul style="list-style-type: none"> Painting 301 Printmaking 301 Photography 301 Drama 301 Music 301
Technology	<ul style="list-style-type: none"> Design & Visual Communication Digital Technologies Food & Nutrition Technology Textiles Design Technology 	<ul style="list-style-type: none"> Design & Visual Communication Digital Technologies Food & Nutrition Technology Textiles Design Technology 	<ul style="list-style-type: none"> Design & Visual Communication 101 Digital Technologies 101 Food & Nutrition 101 Technology 101 Textiles Design Technology 101 	<ul style="list-style-type: none"> Design & Visual Communication 201 Digital Technologies 201 Nutrition & Hospitality 201 Technology: Engineering 201 Technology: Joinery 201 Textiles Design Technology 201 	<ul style="list-style-type: none"> Design & Visual Communication 301 Digital Technologies 301 Nutrition & Hospitality 301 Technology: Engineering 301 Technology: Joinery 301 Textiles Design Technology 301
Languages	<ul style="list-style-type: none"> ESOL French Te Reo Māori 	<ul style="list-style-type: none"> ESOL French Te Reo Māori 	<ul style="list-style-type: none"> ESOL French 101 Te Reo Maori 	<ul style="list-style-type: none"> ESOL French 201 Te Reo Maori 	<ul style="list-style-type: none"> ESOL French 301 Te Reo Maori
Vocational			<ul style="list-style-type: none"> Futures 101 	<ul style="list-style-type: none"> Futures 201 Gateway STAR 	<ul style="list-style-type: none"> Gateway STAR

Courses of Study

Year 9

English
Health
Mathematics
Physical Education
Science
Social Studies

All Year 9 students will have a 5 week preview (taster) in each of the 12 options below, then are able to choose four options which will carry on into the Year 10 study year.

Agriculture
Art
Design & Visual Communication
Drama
Digital Technologies/Media
Economics

Food & Nutrition
French
Te Reo Māori
Music
Technology
Textile Design Technology

Year 10

English
Health
Mathematics
Physical Education
Science
Social Studies
(plus two Option Subjects)

Option Choices at Year 10

Agriculture
Art
Design & Visual Communication
Drama
Digital Technologies/Media
Economics

Food & Nutrition
French
Music
Technology
Te Reo Maori
Textile Design Technology

Year 11 - (NCEA Level 1)

English
Mathematics
Science
(plus three option subjects)

Accounting
Agriculture
Agriculture Trades Academy
Art
Design & Visual Communication
Digital Technologies/Media
Drama
Economics
French
Food & Nutrition

Futures
Geography
History
Music
Physical Education
Recreation
Technology
Te Reo Maori
Textile Design Technology

Year 12 - (NCEA Level 2)

English (Level 1 or 2)
(plus five option subjects)

Accounting
Agriculture
Agriculture Trades Academy
Art - Painting
Art - Printmaking
Biology
Chemistry
Design & Visual Communication
Digital Technologies/Media
Drama
Economics
French
Futures
Geography

History
Mathematics
Mathematics with Statistics
Music
Nutrition & Hospitality
Physical Education
Physics
Recreation
Science
Technology - Engineering
Technology - Joinery
Te Reo Maori
Textile Design Technology
Travel & Tourism

Year 13 (NCEA Level 3 and Scholarship)

(five or six option subjects)

Accounting
Agriculture
Art - Painting
Art - Printmaking
Biology
Chemistry
Design & Visual Communication
Digital Technologies/Media
Drama
Economics
English
French
Geography

History
Mathematics with Calculus
Mathematics with Statistics
Music
Nutrition & Hospitality
Physical Education
Physics
Technology - Engineering
Technology - Joinery
Te Reo Maori
Textile Design Technology
Travel & Tourism



Girl's Uniform Options

Summer Uniform

- Navy dress shorts or CSC summer skirt
- White short sleeved tailored shirt
- Black, flat leather school shoes
- CSC Blazer (Year 11-12)

Winter Uniform

- Napier tartan kilt, maximum length 25 cm from ground
- White long sleeved tailored shirt
- Navy tights
- Black, flat leather school shoes
- CSC Blazer (Year 11-12)

PE Uniform (Unisex)

- CSC t-shirt or vest
- Plain black or navy blue shorts

Outer wear (Unisex)

- CSC navy vest or jersey
- Plain navy or black jacket
- Navy or White scarf



Boy's Uniform Options

Summer/Winter Uniform Year 9/10

- Navy shorts, or mid-grey trousers
- Sky blue long sleeved shirt
- CSC short sleeved shirt (monogrammed)
- Regulation school tie (optional)
- Sky blue walk socks with shorts, or grey or black socks with trousers
- Black lace up leather shoes

Summer/Winter Uniform Year 11/12

- Navy shorts, or mid-grey trousers
- Sky blue long sleeved shirt
- Regulation school tie
- Sky blue walk socks with shorts, or grey or black socks with trousers
- Black lace up leather shoes
- CSC Blazer

Year 13 Dress Code

- Formal dress code requirements are issued at the end of Year 12
- CSC Blazer

Career Pathways

CSC students confidently progress to a wide range of educational, training and employment opportunities beyond school.

A key ingredient in this is the experienced team who provide a comprehensive Careers programme from Year 9 to Year 13. This programme is enhanced by several government funded initiatives which provide students with relevant and coherent learning experiences.

A Junior Careers programme informs students in Year 9 and 10 about possible career options and how their subjects may apply to work and study beyond school.

In Year 9 students attend Course Selection Workshops before choosing their option subjects. In Year 10 students complete a Career Development Unit in Social Studies and there is a Career Workshop prior to subject selection. All Year 10 students attend a variety of vocational taster courses at SIT in December.

Careers advice is readily available anytime and all Year 12 and 13 students have a one-on-one interview about current progress and future pathways.

STAR funding at CSC enables senior students access to programmes in non-conventional subjects within their Vocational Pathway.

STAR funding assists schools to provide students with relevant, coherent learning experiences aligned to their pathway. These experiences help with the smooth transition to further education, training and study.

Gateway enables CSC to provide senior students access to structured workplace learning. Each year, eighteen senior students take part in Gateway. They attend school for four days a week and go to their work placement on Fridays.

Secondary Tertiary Provider funding allows Year 11 Agriculture Trades Academy students to study primary industry unit standards and attend a variety of field trips throughout the year. This provides an awareness of the opportunities available in the primary sector. At Year 12 students have work experience once a week on a farm type of their choice, gaining practical skills they can use when they leave school.





Developing Character Through Sporting Opportunities

Here at CSC we provide an opportunity for all students to be involved in a wide variety of sporting activities.

CSC students achieve at the highest level in sport and our school-wide interhouse competitions help build the special culture that is unique to our school.

At CSC all students have the opportunity to get involved in a huge number of different sports from Archery to Lawn Bowls, Rock Climbing to Surfing.

Special programmes and sporting events each year include:

Octathlon Day

Athletics Day

Swimming sports

Cross Country

Interhouse Touch rugby, Volleyball and T-ball competitions

Inter-school Sports Exchanges

Invest in Sport programme

Physical Activity Leadership Programme



Developing Character Through Cultural and Performance Opportunities

At CSC we have a long history of success and participation across a wide variety of cultural activities. We are dedicated to ensuring that every student who wishes to be involved has the opportunity to take part in the performing arts.

Students can experience and enjoy performing on stage through dance, drama and music. They can contribute behind the scenes through set painting and construction, sound and lighting, set crew, costuming, hair and makeup.

Every student who wishes to contribute will find their place in our performing arts team. We offer a range of activities throughout the year including:

Stage Challenge

Rock Quest

Kapa Haka

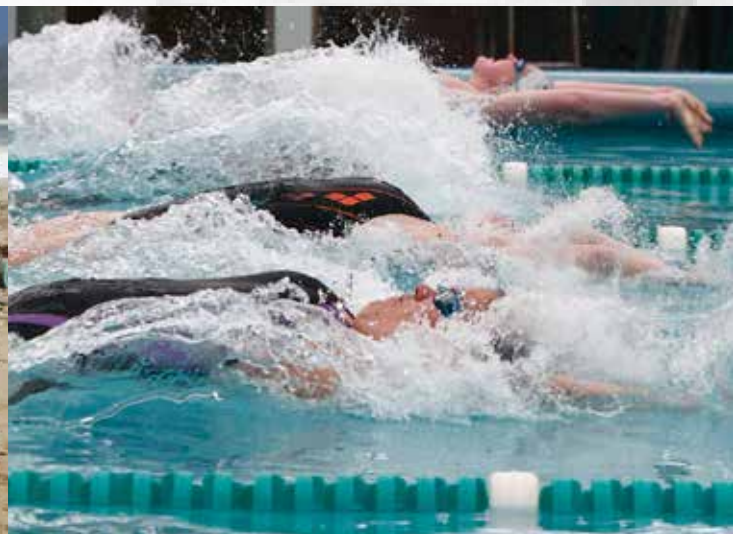
Sheila Winn Shakespeare

Production / Talent on Tour

Jazz Band

Chamber Music

Variety Show



“What could you do”?

Become a Junior house leader and help organise **Inter-house Competitions**

Offer to be a **Subject Demonstrator or Guide on Open Night**

Assist your **Peer Support Leaders** during sessions at school

Help organise the chosen **Charity** for your year level

Lead your class in **Inter-form Competitions**

Participate in the **40 Hour famine**

Take a leading role in an activity on **Year 9 Camps**

In Year 12 become a **Peer Reading Tutor**

In Year 11 become part of the **Enviro Crew** helping to minimise waste and promote recycling

In the senior school, have a go at the **Duke of Edinburgh Award**

Become the next Year 13 **Head Students**

... and many more opportunities.







174 MacKenzie Street
Winton 9720

www.csc.school.nz
office@csc.school.nz